

Dublin Chapter Newsletter

December 2011 Volume 3 Issue 30



Inside this issue:

Free on a Wednesday afternoon? Then why not come along to the Workshop? November's one featured Messrs Lally and O'Neill. Details on page 2.



Riding the Bevel

I'm sad to say that I have not been near the lathe much at all in the last six weeks. This is because I've finally had to bite the bullet and start delivering on a long standing promise to do some decorating in the house before the end of the year. Consequentially, the goodies I brought back from the seminar in Killarney remain as they were when I arrived home.

Talking of the seminar, I had a great time, (some of the photos I took appeared in last month's newsletter). The demonstrations were, as ever, fascinating and insightful. The competition entries were an incredible example of the breadth of items that can be made on a lathe and showed the talent and artistry that exists within the guild. The après turn was pretty good too. The Guild committee and Kerry chapter deserve every credit for putting on a great weekend.

The AGM had an excellent turn-out and well done to all who came. The committee were re-elected with no changes from last year.

My thoughts now inevitably turn to what Santy might be leaving under the tree this year. My hopes were raised when my better half asked me "What would you like for Christmas?" Sadly it soon became patently obvious that the question was in fact a statement: "What you will be getting for Christmas is..."

How can you argue with someone who says things like "Why on earth do you need four drills?" but sees nothing wrong with having 500 handbags?

My new strategy is quoting David McWilliams as saying "Investing in woodturning tools offers perhaps the best safe haven for your money should a break-up of the Euro occur." I'll let you know how that one goes but for now it looks like I'll just have to head out to happy place over the break in the knowledge that those bits and pieces I picked up in Killarney are waiting for me!

Best wishes to everyone for a Merry Christmas.

Varn.



◀ **Christmas Tree** - Peter Mulvaney made a decoration for the festive season after our AGM. Page 3.



Competition Winners: Photos from the AGM where the winners and runners up were presented with their awards on page 3.



Coming Soon

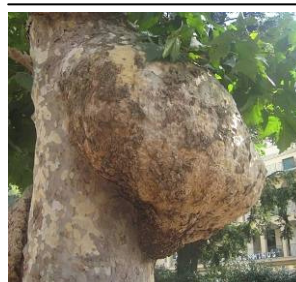
Wed 7 December - Workshop (Scout Hall)

Thu 8 to Sat 10 December - (Tallaght Library)
Craft Fair from 10am to 8pm

Sat 7 January - (Scout Hall)

Demonstrator: Rich Varney
Competition: Fruit Bowl (with pedestal for Advanced & Experienced)

Wed 11 January - Workshop (Scout Hall)



Tony Hartney spotted this tree in Italy earlier this year. Sadly he didn't bring a chainsaw so had to make do with taking photos of the huge burls. Does anyone know what type of tree this is?

Don't forget to come and support the Craft Fair taking place in Tallaght Library from 8th to 10th December. As usual we need items for display in the Woodturning Exhibition and also items for sale on behalf The Alzheimer's Society of Ireland. Items in either category can be handed in at our regular meeting on 3rd December or brought to the library during the week. We need lots of volunteers to man the stands at this event - Contact Frank Maguire 087 2853716

Meanwhile, John Owens work will be on sale at Sandymount Post Office on 8th and 9th December with proceeds going to the Matero Friendship Programme (Africa).

Notes from the Chairman

When we look back over the last twelve months there have been many changes which have effected every one of us. Some for the good and some for the bad. We have come to terms with those changes and I hope that we in our woodturning comradeship have helped in sharing your experiences. Our meetings and activities over the year were organised for your enjoyment and every member of the committee has been very supportive in carrying out their various duties to make the meetings and activities a success.

The membership of our Chapter has remained stable over the year and the attendance at the meetings has been very good. Our Wednesday afternoon workshop has also been well attended. Our seminar also was a great success and had many members from other chapters supporting us.

Our sole charity, the Alzheimer's Society of Ireland, received generic contributions

throughout the year raised from sales and donations from members.

There are a few ways we can improve our Chapter and here they are.

1. If each member could introduce a new person to join it would help boost our profile along with our finances even though we are a non profit organisation. Junior members would very welcome to join too.
2. More members could put their work forward in our monthly competition and this way they can improve their quality along with their skill.
3. Articles for our newsletter are always welcome and it would be great if we could get members to do a write up on their woodturning experience. A how I done it with pictures could be a great way of having our website feature it too.
4. Send photos of your work to our web
5. master for inclusion on our site. Owen would welcome this very much.
6. Pay your Guild subscription early. Peter would have a smile on his face if you did this.
7. Share a car with members in your area coming to the meetings.
8. Now it's your turn to suggest a few ideas of your own.

May I wish you and your family a very peaceful and happy Christmas.

Joe O'Neill



Woodturning Night Classes in Dublin

A small number of VECs run woodturning night classes in the Dublin area. These usually consist of one class per week for ten weeks. The first class consists of an introduction to the lathe, woodturning tools and safety followed by some practical lathe work. Subsequent classes include demonstration and practice in using the various tools and turning beads and coves. At this point students will complete a small item such as a garden dibber. Very quickly students begin their first major project, usually a table lamp. This project allows practical experience on spindle turning as well as faceplate and chuck use. The number of projects completed in the ten classes depends on the individual student.

Course fees do not usually include materials such as wood etc. Students may bring their own timber or tutors will supply suitable blanks for a small fee.

Some students come back for further series of classes. Projects for further classes reflect the skill level of the student.

Enrolments for courses are in September and January each year.

Night classes are a really inexpensive way of learning the basics of woodturning and meeting

others with the same aims.

On the Southside of Dublin woodturning courses are held in Saint Tiernan's College just up from the Dundrum Shopping Centre. The tutor here is our own Owen Furniss. Classes are held on Monday, Wednesday and Thursday evenings.

Further information at
<http://www.adultedtiernans.ie/>

On the Northside of Dublin woodturning courses are held in Trinity Comprehensive School, Main Street, Ballymun. The Tutor is Chris Hayes. Classes are held on Monday evenings.

Further information at
<http://www.trinitycomprehensive.ie/>

Coincidentally, the Coordinator of night classes in Tallaght Community School Eoin Morris, has been in contact with Pacelli O'Rourke. Eoin intends to put basic woodturning on as a night course next term and is looking for a tutor for this. The length, shape and make of the course would be as decided upon by the tutor. If any members are interested in teaching this course, please contact Eoin Morris on 0873695555.

Woodturning Classes

Joe O'Neill offers classes on Tuesday and Wednesday A.M. & Thursday nights.

Telephone: 087 623 0162
Email: rudyperudy@yahoo.com

Woodturning Tuition

Morning, afternoon, evening of full day tuition available for 1 to 2 students. Graduate Lathe per student.

Contact: Peter Mulvaney
Telephone: 01 280 2745

Workshops

For those lucky enough to be free on a Wednesday afternoon, the workshop at the scout hall gives another opportunity to get your woodturning fix.

In November, Tony Lally made an off-centre tea-light holder and Joe O'Neill demonstrated how to store a bandsaw blade.



These workshops take place every month on the Wednesday following the Saturday meeting from 2pm unless otherwise advised.

Photos by
Tony Hartney

O Christmas Tree

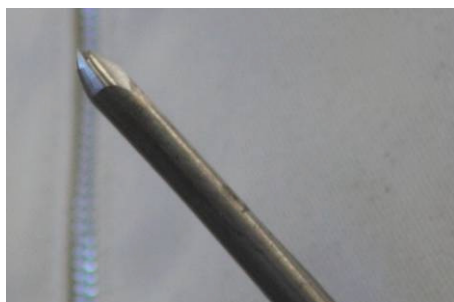
Peter Mulvaney treated members who attended the November AGM to a bonus demonstration

The second half of our AGM in November saw Peter Mulvaney demonstrate making a Christmas decoration in the form of a tree. Peter informed his audience that he had an order to fulfil for 50 of these trees and he proceeded to go through the process of making one.

Peter's detailed explanations included the choice of timber, design considerations and selecting good proportions for the tree. The blank was turned down and the positions where the branches



should be marked and cut out with a parting tool. With the basic dimensions set, Peter



produced a spindle gouge with a special grind that he has developed in order to cut in to the confined space between the branches. Further explanation and demonstration of how this grind

is made and how it works in cutting in to the tight space without catching followed.



With the tree itself turned and sanded, Peter moved on to colouring the ball at the top and finishing. He then moved on to the base which was turned from a contrasting timber. Peter's tree was a great success and was auctioned in aid of the Alzheimer's Society. Thanks to Peter for an excellent demonstration.

Rich Varney



Competition News

The winners and runners up in the 2011 competitions were presented with their prizes and certificates at the AGM in November.



Michael Fay, Cecil Barron, Rich Varney and Peter Curran collected their trophies for the Advanced, Artistic, Experienced and Beginners categories respectively.



The excellent and suitably artistic new trophy awarded to Cecil (see photo below) was made by Cecil himself and becomes the perpetual trophy for the Artistic section.



2011 was a bumper year for competition entries and we are hoping that 2012 will be even better. Why not take advantage

of those dark winter evenings and start making your entries for the year ahead early

The provisional list of competition items for 2012 (subject to change if our seminar is not in May) is:

January	Fruit Bowl (with pedestal for Advanced & Experienced)
February	Open Competition
March	Goblet (with captive rings for Advanced & Experienced)
April	Laminated Turning
May	Open Competition
June	Natural Edge Bowl
July	Off-Centre Turning
August	Box
September	Hollow Form
October	Cup and Saucer
November	A.G.M.—No Competition
December	Christmas Item

The Competition rules for 2012 are printed on page 4. Any queries regarding the rules can be directed to our competition secretary, John Doran.

2012 Committee



Chairman
Joe O'Neill
☎ 087 623 0162
✉ DWT.Chair*



Secretary
Alison Hurst
☎ 086 856 0472
✉ DWT.Secretary*



Treasurer
Vincent Whelan
☎ 087 760 4918
✉ DWT.Treasurer*



Vice-Chairman
Joe McLoughlin
☎ 087 261 0803



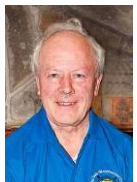
Membership
Peter Mulvaney
☎ 01 280 2745
✉ DWT.Membership*



Competitions/Workshops
John Doran
☎ 087 639 3081
✉ DWT.Competitions*



Books & Video
Eamonn Boland
☎ 086 274 7600
✉ DWT.Library*



Exhibitions
Frank Maguire
☎ 087 285 3716
✉ DWT.Exhibitions*



Exhibitions
Adrian Finlay
☎ 087 983 8633



Newsletter
Rich Varney
☎ 086 832 7985
✉ DWT.Newsletter*

DCIWG Competition Rules

29/11/2011

It is a condition of entry that all entrants accept the rules and conditions.

The ruling of the Competition Secretary is final and binding.

The competition is run at the monthly meetings with monthly winners in each category at the meeting and annual winners announced at the A.G.M.

The specification for the competition item will be announced in advance and must be strictly adhered to. No baize to be used on any competition pieces.

Entries will be accepted only up to the start of each meeting.

Competition items must not have been entered in a previous DCIWG monthly competition and must not have the name of the maker visible.

Judging: Three judges, one of whom may be a beginner will be selected at each meeting and marks will generally be awarded for form, finish and function. Judging will take place in three categories: Beginners, Experienced, Advanced.

An additional Artistic competition will run at each meeting and will be open to all members.

Marks: Every entrant will receive 5 points. Additional marks will be awarded in each category: -

1 st	Additional 10 marks	4 th	Additional 4 marks
2 nd	Additional 8 marks	5 th	Additional 2 marks
3 rd	Additional 6 marks	6 th	Additional 1 mark

The turner of the year will be determined from the accumulation of the monthly scores to a maximum of ten months. In the event of an entrant having 11 entries, the lowest score will be deducted.

Promotions: Beginners are promoted to the Experienced category following two wins or one win and two seconds. Experienced are promoted to the Advanced category following three wins or two wins and three seconds.

The turner of the year in both the Beginners and Experienced categories will also be promoted regardless of the number of wins and second places attained.

All promotions will take place at the end of the year and are announced at the A.G.M.

Prizes: The monthly winners in each category will receive a certificate.

Turner of the year prizes: The turner of the year in each category will receive the perpetual trophy for the category, a memento and €100 prize money. In addition, 1st, 2nd and 3rd in each category will also receive a certificate.

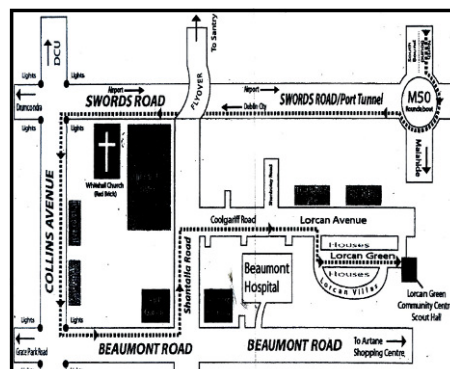


Dublin 15 Chapter meet on the 3rd Thursday of every month, 7:30pm to 10pm, at the **BRACE Centre, Main St, Blanchardstown, Dublin 15.**
www.craobhcuigdeag.org

Woodturning Classes

Joe Laird woodturning Studios
Half-Day, Full-Day, Evening and Weekend classes available (up to 5 students) for all skill levels.

Ph: 01 825 8079 / 087 269 8027
www.joelairdwoodturning.com



Dublin East Central Chapter meet on the second Saturday of each month in **Lorcan Green Community Centre / Scout Hall** from 2.00 pm.
Tel: 086 8241470
www.eastcentralchapter.com

Woodturning Supplies

The Hut

Ph: 086 333 3226 / 086 813 2040
Email: dahut@live.ie
www.thehutwoodturningsupplies.com

* When sending e-mail to the "DWT" addresses, remember to add "@gmail.com" to the end of the e-mail address given. For example DWT.Newsletter@gmail.com.