

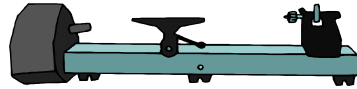


Dublin Chapter Newsletter

January 2012 Volume 3 Issue 31



Inside this issue:



Owen Furniss had fun describing the turning that went into his winning item in December. More competition news and photos on page 2. ▶



Riding the Bevel

It will be bad enough for everyone who makes the effort to attend the January meeting being subjected my old patter without having to read it in the

newsletter too. So I'll be brief this month and just wish you all a very happy New Year

Varn.

Coming Soon

Wed 11 January - *Workshop* (Scout Hall)

Sat 4 February - (Scout Hall)

Demonstrator: John Doran
Competition: Open—Anything Goes!

Wed 8 February - *Workshop* (Scout Hall)

Sat 25 February - *Trip to Glenn Lucas*

Note: This date is not yet confirmed.

◀ *Joe O'Neill demonstrated making a Bangle at the December meeting and was avidly watched by Pacelli O'Rourke. Page 3.*



Exhibition News

The exhibition in Tallaght library ran for three days from 8th - 10th December and was part of a craft fair which the library organised as part of the 'year of craft' for 2011. We had a very successful show and raised €560 for the Alzheimer's Society of Ireland from the sale of items and donations. This compares very favourably with last years €360 over a five day period. Overall we sold 60 items and this works out at an average price of about €10 per piece. This is a small amount for the effort involved in making the items but the reality is that the present economic situation makes it very difficult to make any sale over €15.

Thanks to all those who contributed items for the sale and items for display. We also received a large box of items produced by a deceased member, Jim Byrne, some years ago. Cecil Barron brought these in and I am glad to say virtually every one of them found a buyer. For various reasons the number items contributed on the previous Saturday was less than usual so this box was very welcome indeed.

As well as the sale, we also ran a raffle for Peter Mulvaney's lovely model of Glint castle. This raised a total of €426, some tickets also having been sold at the previous meeting as well. This gives an overall total of €986 for Alzheimer's.

The winner of the castle was Maire Ni Dhomhnaill who works in the South Dublin council offices. Peter then offered a second prize of a day's woodturning tuition and this was won by our own Vincent Whelan. The winning tickets were drawn by Emma Perry of the library staff.



On Thursday, lunchtime, we also had a very well attended woodturning demonstration by Peter Mulvaney. This was done on the main library floor which got maximum attention and a very appreciative audience as Peter demonstrated his Christmas decoration; many thanks to Peter for his huge contribution to the success of this years show.

Thanks again to those who contributed items, those who gave their time to manning the stands during the three days. A word of thanks also to the following suppliers who contributed spot prizes for the draw - The Hut, McQuillans, Goughs - keep them in mind when planning a purchase. Thanks also to Rosena Hand and Emma Perry of the library for their help and assistance.

The next exhibition will be in Tallaght hospital in May/June - depending on when the chapter's seminar takes place. We will need lots of items for this so now is the time to start putting something aside which will ultimately go to help our sponsored charity, Alzheimer's Society.

Happy new year,
Frank Maguire

Notes from the Chairman

Greetings and Happy New Year. Over the Christmas we had the base set for the arrival of our container. As you can see now it's in its resting place and ready to receive our equipment.

Special thanks go to Cecil Barron, John Sheerin, Vinny Whelan, Joe McLoughlin and Mr O'Rourke who made it possible. Thanks also to the scouts for letting us park it at their site.

To help defray the cost we will have a raffle at €5 a ticket which will be held in March. (If you have any unwanted gifts you are welcome to donate them as a prize.)

We have an invitation from Glenn Lucas to visit his workshop for a day (tentatively planned for 25 February). We need to know how many would be interested so as to let Glenn know. The cost for the day which includes lunch and coffees & teas is €30.00.

One of our projects in this year is making a spinning wheel. (We made six before so we

have the know how of it by now). The plans are available all we need is some wood turners to make them. One two or three members can join up to make a team to do the Spinning wheel. Most of the turning is spindle work and some plain woodwork and a bit of metalwork.

The selected wheel will represent the Chapter at the Chapter challenge at Killarney seminar.

If there is any topic on woodturning you would like to see demonstrated at our monthly meeting let me or any of the committee know. We will have some new faces demonstrate for us this year and as soon as we confirm with them you will know who they are.

It's that time of year again to renew your membership and the sooner you have it done and out of the way the better.

The insurance has gone up in price but its good value for those who use it.

Our unwanted tools and bits and pieces for sale or give away has been well received last year so if you have something you don't want may someone else could be looking for it and



everybody is happy. You can also have your items for sale put in the newsletter so let Richard Varney know.

We look forward to an increase in the competition pieces in all categories this year. If you have a lathe use it and lets see what you can do. We will help in any way we can but it's up to you in the end. You will have great satisfaction seeing your work progress. Come on now and don't be shy we would love to see your work.

My wish is that you enjoy your turning.

Joe O'Neill
Chairman, Dublin Chapter I.W.G.

December Competition Winners



Owen Furniss (Advanced)



James Gallagher (Artistic)

The new competition year kicked off in December with a Christmas item the remit for all but the Artistic category. Owen Furniss claimed first place in Advanced with a Christmas scene comprised of over 30 separately turned pieces. Pacelli O'Rourke's set of decorations came first in the Experienced section and James Gallagher took first place in the Artistic category. There were no entries in the beginners section in December for the fourth year running.



Pacelli O'Rourke (Experienced)

Advanced	Total
Owen Furniss	15
Seamus O'Reilly	13
Willie Reville	11
Cecil Barron	9
Frank Gallagher	7
Rich Varney	6
Peter Mulvaney	5
Joe O'Neill	5
Experienced	Total
Pacelli O'Rourke	15
Noel White	13
John Doran	11
Alison Hurst	9
John Owens	7
Paul Murtagh	6
Artistic	Total
James Gallagher	15
Cecil Barron	13
Peter Mulvaney	11
Joe O'Neill	9

Competition Photos by Hugh Flynn

Jingle Bangles

Joe O'Neill's demonstration rounded off our meetings for 2011. As ever, Pacelli O'Rourke was on hand to take copious notes

Well, we are all to watch Jean Byrne, the weather lady on R.T.E. especially when she raises her arm for meteorological reasons. (So much more than a "weather lady", Jean is a meteorologist, fashion icon and the only person I know who can maintain my interest while talking about isobars -Ed.) She may just be wearing a bangle supplied by our doughty demonstrator! Joe caught the festive mood from the outset with this presentation, carried out in his seasonal colour-combination of red and furry white.



Down to business. The blank needs to be a stable wood without cracks. Joe initially used a slice of Laburnum log about 125mm (5") dia. by 38mm (1½"). This was mounted on a screw-chuck, with a 'spacer' to reduce the length of the thread protruding into the timber.

Joe is good value as a demonstrator, and the process was generously sprinkled with practical tips and nuggets of advice. For example "Always have the first aid kit handy" and "wear protection" [Perhaps the last bit was more pharmaceutical than anything else!]

This blank had the capacity to end up as 2 bangles, the larger outer piece, and the 'middle' piece. For these notes the focus will be on the latter.



The inner diameter of the bangle will be about 75mm (3"). This is marked on the face of the blank using regular callipers. (Joe recommends grinding the points of these callipers for safety reasons.) The thickness of the bangle is a matter of choice and will be registered with a thin parting tool. The area between these two concentric circles marks the specific area of the bangle—blank seen from the face.

The next operation is similar to coring a bowl blank. Joe used a parting tool marked to a depth equalling the desired width of the finished article. Two channels are opened to within 10mm (¾") of this depth, representing the outside and inside of the 'middle' bangle. It is advisable to widen these channels so the tool does not bind.

At this point the blank is reversed and marked as on the opposite side, as accurately as possible. A few spots of hot-glue were applied to hold the outer piece against the 'spacer', once released. This task was now carried out, and the outer piece prised free, giving partial access to the outer part of the bangle. This can now be shaped as desired. Joe put a pleasing, gentle domed shape across as much of this as was accessible. Similarly a little curvature can be worked into the inside edge. "Sharp tools are essential." Joe advises; "Take your time. If it's getting too much, leave it and walk the dog". (Maybe there's a slight assumption here! Otherwise sound advice!). Having formed the accessible part of the bangle including sanding through the grits, it can now be completely parted from the centre section.



Joe used a homemade sanding drum in the chuck to deal with the inside of the piece. As he says "You can always figure out a way to get out of problems!"

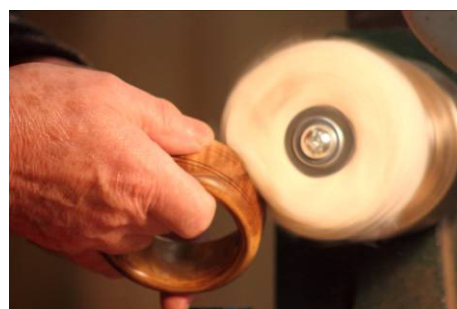
He now mounted a nice piece of lime to form a jam-chuck. Tissue paper was mentioned as a remedy for looseness at this stage (though it might also come under the heading of 'wearing protection' ominously referred to by Joe earlier!)

Joe was sizing the jam-chuck, when the gremlins paid a visit and — the partly formed bangle cracked and came off. Now our man is nothing if



not resourceful, and having expertly executed this deliberate 'mistake' he did two things: First, he highlighted the dangers of expansion-holds when the material is rather thin, and secondly he set about addressing the problem with superglue and narrow masking tape. He had finished sanding one half of the item, and was doing the same having reversed it into the jam-chuck when it developed rather a serious wobble. At this point Joe smiled serenely, removed the offending piece with "I'll finish it on Wednesday" (and he did) and drew from his box-of-tricks, a perfectly formed bangle he had "prepared earlier". This had some attractive scorched V grooves on. As Joe mentioned, the scope for embellishment is really only limited by one's imagination. For example one could create a sunken area and fill it with adhesive and crushed seashells or whatever. Joe now dealt with finishing which was indeed fascinating to watch and produced stunning results.

Finishing



There are many and varied ways of finishing any item. Joe used a proper finishing kit, including a long arbor, designed to take a series of specialised polishing mops. Some 'Triple E' cutting compound was applied to the first of the mops, to which the bangle was firmly offered. This took care of any scratch marks on the piece (as if!) though the finish was dull. Secondly, some 'White Diamond' compound was worked in the same fashion. A good shine now became apparent. Finally, a carnauba wax stick was deployed, leaving the piece with the most brilliant lustre, "an everlasting finish".

Continued on Page 4

Jingle Bangles

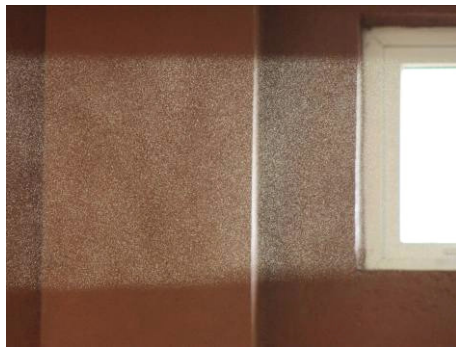
Continued from Page 3

Joe also referred to other approaches to finishing. For example two coats of finger-spread cyanoacrylate (superglue) "First cover your finger with a bit of polythene." (Not a rubber glove, as the adhesive will react rapidly with the rubber. Also make sure you are in a well ventilated area). Acknowledgements to our resident professional adhesive consultant, Joni Wigham, for the latter two points." Among alternative finishing products mentioned are: Ultra Shine, T Cut, Renaissance wax, Briwax etc, over a couple of coats of sanding sealer.

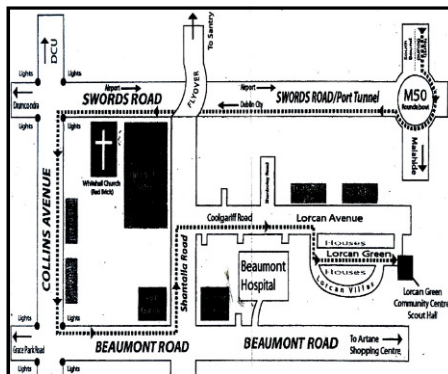
So there you are. Joe ended with some cautionary comments regarding the potential of some timbers and finishes to cause troublesome skin-reactions to certain people. I suppose this is something to bear in mind especially if one knows the identity of the wearer. Thanks Joe, for an entertaining, informative morning. And may I say, on behalf of us all, what a joy it is to see you moving so well on the podium once more.

Pacelli O'Rourke

P.S. Useful Website addresses regarding wooden bangles: www.ehow.com also www.bosquecarpentry.com



We often don't see just how much dust is suspended in the air we are breathing. But the bright sunshine streaming through the windows during Joe's demo in December showed just how much dust is thrown into the air by woodturning. This photo was taken long before Joe had reached for any sandpaper and should act as a timely reminder that we all need to adequately protect our lungs at all stages while turning.



Dublin East Central Chapter meet on the second Saturday of each month in Lorcan Green Community Centre / Scout Hall from 2.00 pm.
Tel: 086 8241470
www.eastcentralchapter.com

2011 Committee

Chairman: Joe O'Neill

☎ 087 623 0162

✉ DWT.Chair*

Secretary: Alison Hurst

☎ 086 856 0472

✉ DWT.Secretary*

Treasurer: Vincent Whelan

☎ 087 760 4918

✉ DWT.Treasurer*

Vice-Chairman: Joe McLoughlin

☎ 087 261 0803

Membership: Peter Mulvaney

☎ 01 280 2745

✉ DWT.Membership*

Competitions & Workshops: John Doran

☎ 087 639 3081

✉ DWT.Competitions*

Books & Video: Eamonn Boland

☎ 086 274 7600

✉ DWT.Library*

Exhibitions: Frank Maguire

☎ 087 285 3716

✉ DWT.Exhibitions*

Exhibitions: Adrian Finlay

☎ 087 983 8633

Newsletter: Rich Varney

☎ 086 832 7985

✉ DWT.Newsletter*

* When sending e-mail to the "DWT" addresses, add "@gmail.com" to the end of the email address given e.g. DWT.Newsletter@gmail.com.



Dublin 15 Chapter meet on the 3rd Thursday of every month, 7:30pm to 10pm, at the BRACE Centre, Main St, Blanchardstown, Dublin 15.
www.craobhcuigdeag.org

Woodturning Supplies

The Hut

Ph: 086 333 3226 / 086 813 2040

Email: dahut@live.ie

www.thehutwoodturningsupplies.com

Woodturning Classes

Joe O'Neill offers classes on Tuesday and Wednesday A.M. & Thursday nights.

Telephone: 087 623 0162
Email: rudyperudy@yahoo.com

Woodturning Classes

Joe Laird woodturning Studios Half-Day, Full-Day, Evening and Weekend classes available (up to 5 students) for all skill levels.

Ph: 01 825 8079 / 087 269 8027
www.joelairdwoodturning.com

Woodturning Tuition

Morning, afternoon, evening of full day tuition available for 1 to 2 students. Graduate Lathe per student.

Contact: Peter Mulvaney
Telephone: 01 280 2745

"Woodturning" Magazine

Terry Cruise is once again organising subscriptions to "Woodturning" magazine on behalf of the guild. The cost this year is a bargain €42. Details on how the subscriptions will be collected will follow.

Guild Optional Insurance

The Guild insurers have announced an increase in the cost of policies for 2012. The cost of the policy is now €75. Please would those who have already paid at the old price, arrange to pay the balance to the treasurer or membership secretary.



You can keep up to date with the latest news and happenings in the chapter by joining us on Twitter and at our new Facebook account. You can find us on Facebook by searching for "Dublinwoodturners". If you are a Facebook user please "Like Us" and "Let's be Friends". You can also access our Facebook Page and Twitter Pages using the links on the top left of our home page: www.dublinwoodturners.com