

Dublin Chapter Newsletter

October 2017



Inside This Issue:

▷ Threads and Beads from Peter Mulvaney. - p1.

▷ Wednesday Demo - P2.



▷ National Seminar forms - P8.

Upcoming Events:

- Next DWT Meeting - 4th November.
- Nov Sat. Demonstrator - Pat Walsh.
- Dec Sat. Demonstrator - Joe O'Neill.
- **National Seminar** - Oct 14/15

September Demo – Peter Mulvaney

When Peter Mulvaney does a demo you are assured that he will pick subjects that one can relate to and he will pass on experience gained from many years at the lathe.

The September demo gave us three topics from Peter: - How to make a threaded post and nut; how to route a radial pattern into a bowl face; and the use of a variety of tools to make beads and coves.



Threaded Post and Nut

Using a square blank of mahogany-like wood about 40 cm long which was held between chuck and tailstock, Peter set about reducing it to a 23 mm diameter. Pausing to explain the finer points

of using the roughing gouge, he then reduced the blank using a variety of methods to ensure a uniform diameter along the post.

His first method used a spanner to check diameter, rather than using callipers. It is robust and can easily mark the wood when required. Selecting a 1 in spanner (which is just greater than 23 mm) Peter tested his roughing with the two prongs of the spanner. If it fitted, then it was down to size – if it didn't, then that was a high spot and it could be marked by applying pressure to give a shiny mark so he knew where to remove more material. Secondly, Peter showed how to take a piece of blackboard chalk and by holding it lengthwise against the wood while it was slowly turning, and moving down the length of the piece, it would chalk the high points. Finally, using a 6 in sanding block, around which 150/180 grit emery was bound, the high spots could be removed with the longer block-length moving back and forth along the piece.



With the rounded blank to his liking, Peter proceeded to cut the male thread on the post. For this he used a female thread cutter complete with its own turning fitting and handles. He made the use of the cutter look easy, with the post still in the chuck.

The nut was to be made from similar wood that was 5 x 5 x 1.5 cm. Peter brought this along already drilled with a 22 cm hole. With the blank in his 4-jaw chuck, he firstly put a taper on the inside of the hole and rounded the entrance to it to ease the entry of cutter in the next step. He completed the taper with a tool that he had ground to his specification. It was made from round bar with a cutting edge ground across the bar at



Who was winning 10 years ago?

Pictures of Competition winners ten years ago this month. Recognise any of them?

Answers towards the back.



Advanced



Experienced



Beginners

the centre line. Then, using a male thread cutter, he proceeded to cut the female thread inside the hole (having firstly reduced the size of the thread cutter's handles – they were too long for the swing of the Chapter's small Jet lathe. Murphy was with us on the day!). Peter then assembled the thread and its nut which had a smooth action when turned.

Bowl with Radial Decoration.

For the second part of his demo, Peter showed us a finished 20 cm bowl made of beech that had dark strips 2 -3 mm wide inlaid radially into the face of a bowl (see picture). His focus was to show us how to make the slots for the inlay.



To do this he planned to use a router supported on a small work table made of 30 x 20 cm of MDF, that was held on the lathe by (you guessed it) threaded posts and nuts. He had already made the jig with threaded nuts pinned to the underside of the work table. Into the nuts were screwed two posts. The jig was secured to the bed of the lathe by a pair of wooden slats positioned across the bed, one above and one below, where they had holes drilled to allow the posts to pass through them, clear of the threading. On each post a further two nuts were then used to tighten against the slats which held the whole jig firm on the bed. The lower nuts could be adjusted to change the height of the table.

Peter did not go through all the steps of making a bowl, but one would have had to complete the bottom, with a spigot or recess, and then reversed it to true up the face. Mounting the blank in the headstock, Peter proceeded by scribing two circles on the face that marked the intended inner and outer extent of the radial inlay. The jig was then adjusted for height giving consideration for the router to be used. Then, using the headstock indexing (assisted by Mark Daly), Peter routed a series of grooves for the inlay. He had previously disconnected the power supply to the lathe as a safety precaution.

The black walnut inlay was then super-glued in place. The inlay was left proud and beyond the inner or outer circles. The material would be removed as the bowl was shaped in the subsequent steps.



Tools, Beads, Coves

For the last part of his demo, Peter placed a blank between centres and dashed off a series of beads of various

Chairman: Joe McGloughlin
087 2610803
DWT.Chair@gmail.com

Secretary: Joe O'Neill
087 623 0162
DWT.Secretary@gmail.com

Treasurer: Vincent Whelan
087 760 4918
DWT.Treasurer@gmail.com

Vice-Chairman: Peter Mulvaney
087 1254264 / 01 280 2745

Membership: Martin Boyle
086 1733347
DWT.Membership@gmail.com

Competitions/W/shops: John Doran
087 639 3081
DWT.Competitions@gmail.com

Books & Video: Willie Edwards
DWT.Library@gmail.com

Exhibitions: Paul Murtagh
087 133 1292
01 456 5509

Audio/Visual: Open
DWT.Video@gmail.com

Newsletter: Mike Sims
087 989 8793
DWT.Newsletter@gmail.com



sizes. His point here was that one should try a variety of tools apart from the traditional spindle gouge for making beads. For example, a wide parting tool, a skew, or a bedan can be used along with other specialised tools. Peter showed us one of his tool that was made from a diamond cross-section bar with an angular grind (see picture) that he used expertly. He had no name for the tool. Finally, Peter showed us how to use a round-nosed scraper to make a cove, making sure that the final cuts (scrapes?) were downhill with the grain

Overall, an interesting demo that overflowed with useful techniques and information. Thanks Peter.

Mike Sims.

Demonstrators 2017

Saturday

October - Pat Walsh

December - Joe O'Neill

November - AGM

Wednesday

October - Noel White

December - Joe O'Neill

November - John Sheeran

Sep Competition Entrants



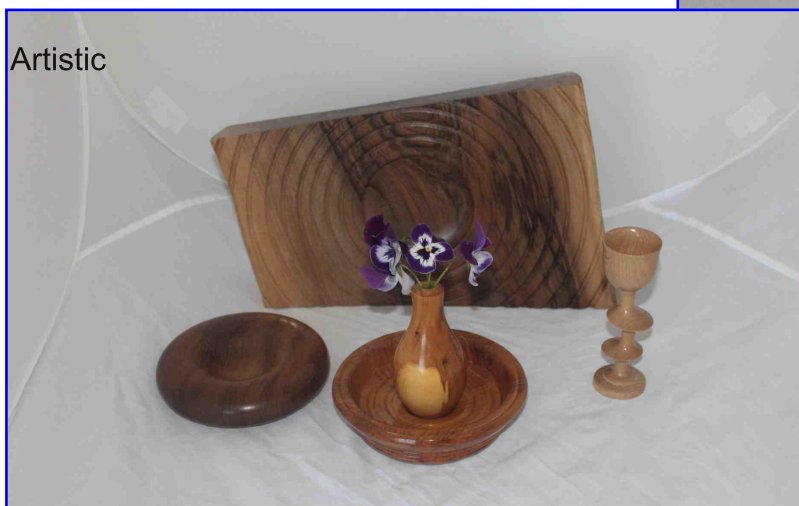
Advanced



Experienced



Artistic



Beginners



Sep Competition Winners



Advanced - Michael Fay



Experienced - John Duff



Artistic - Paul Murtagh



Beginners - Colm Murphy



Competitions Pieces 2017

OCT - Three-legged Stool
NOV - AGM

DEC - Christmas Item

Trade Stands at the Saturday Meetings for 2017.

Oct	The Carpentry Store	Dec	The Hut
Nov	The Wood Shed	Jan 2018	The Wood Shed



At the Wednesday meeting Tony Hartney brought along 3 balloons destined for the Tallaght Hosiptal for the children to paint. Here is one of them.

Made by Tony Hartney, James Gallagher, Fran Lavelle & Tom Noonan.

For sale

A *Trend Router Lathe*, a small router, and a box of router bits. €80, or nearest offer. Call Peter Mulvaney on "087 1254264". It can turn spindles, do fluting and barley twists.

For sale

A Scheppach scrollsaw, model deco 405 vario. Offers around €250. If you are interested contact Chris Hayes at 0863087110.

September's Wednesday demo "show and tell".

A variety of members participated in this event which produced a variety of ingenious tools and jigs to help around the workshop. They were as follows: -

Stephen Coffey.

1. Use a discarded key-less chuck, from an electric drill say, and insert it into a tool handle. This can then accommodate a variety of bars that have been ground for turning.
2. A depth-gauge for measuring the depth of bowls, and other things, that was made from odd things that he had. This included the stair carpet rod from his mammy's house!
3. A steady, for use when turning long thin items, that can be affixed to the lathe bed. A sturdy device.

Gerry Lawlor.

4. A jig for the table saw. A tray, with a slot to accommodate the saw blade and sturdy 2 x 4s at each end such that the tray can be held safely when wood is placed in the tray for cutting.
5. A template for use with a carpenters chisel sharpner. The template gets the correct angle for a series of chisels, Gerry had four, whereby the chisel is placed in the sharpener and then pushed up against a stop to expose the right amount of the chisel beyond the sharpener, such that it offered at the correct angle.

Peter Hoare.

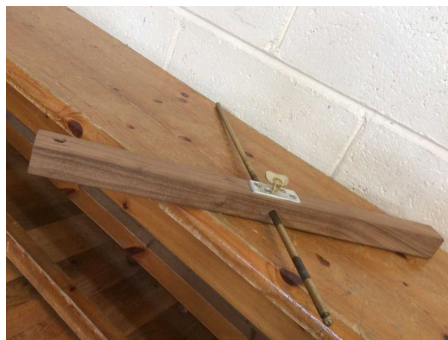
- A large range of jigs that he uses to make spinning wheels. No pictures, unfortunately.

Tony Hartney.

6. How to produce small oval-shaped wooden jewelry items. Remove the spigot or other holding device from a screw-chuck and replace with a screw/bolt. Take a steel plate about 100 x 100 x 4 mm and make a series of threaded holes, one in the centre, four around that, and another twelve around those. The size of the threaded holes are the same size as the screw/bolt on the screw chuck. Drill four more holes just inside the four corners. Bolt a sheet of any smooth material (perspex, MDF) to the outside of the plate using the four holes at the corners, and then affix to that, the wooden blank with double-sided tape. The screw chuck can then be moved to various holes to give different degrees of off-centre turning to produce the jewelry.



1.



2.



3.



4.



5.



6.

Current Competition Positions

Advanced

NAME	Dec	Jan	Feb	Mar	Apr	May	June	July	August	September	October	Nov	TOTAL
Tony Hartney	15	13	11	15	13	11	13	9	15	13			128
Willie Edwards													9
Martin Boyle	13												13
Sean Ryan	11	7	5	6	7								36
Pecelli O'Rourke	9		5										14
Pat Walsh Enniskerry		9	5	9									23
Sean Earls			5										5
Adrian Finely		6	9	7									22
Jonathan Widgam		5											5
Seamus O'Reilly		5	5										10
Frank Maguire	7		5						13	9			34
David Sweeney		5	7	11	11								34
Bob Finley			13										13
Paul Murtagh			5		7	9	11	13	6				51
James Gallagher			5						11				16
Joe O'Neill				5									5
Paddy Finn					9			11		11			31
Michael Fay		15	15	13	15	15	15	15	5	15			123
Pat Walsh (Big)						13							13
Cecil Barron		11	6						7				24

Experienced.

NAME	dec	January	February	March	April	May	June	July	August	Sept	October	November	TOTAL
John Duff	15	15	13	15			13	15	13	15			114
Michael Jordan	13				0								13
John Sheeran		13				0							13
Dicey Reilly		11											11
Alan Smyth			15				15						30
Kevin McCormack			11										11
Colm Murphy									15				15

Beginners

NAME	dec	January	February	March	April	May	June	July	August	Sept	October	November	TOTAL
Colm Murphy	15	15	15	15	15	13	15	15		15			133
Michael Colclough			13										13
Brenda Kelly		January						11	13				24
Renee Kennedy			11	9			9						29
Phillips Gaynor				6									6
Milk McWilliams							6						6
Anthony Carolan			7	11			7						25
Michael Quinn					12		13						25
Vincent Whelan								9					9
Mike Simms						15							15
Robert Dowdall		13											13
Tommy Hartnett		11	9	13	11	11	11	13	15	13			107

Artistic

NAME	dec	January	February	March	April	May	June	July	August	Sept	October	November	TOTAL
Cecil Barron	15	15	13	9	11	13	13	15	9	13			126
Paul Murtagh	13		15			5	15	13	11	15			87
Seamus O'Reilly			11	15	15	11		11		7			70
Pat Walsh (Big)						15							15
Michael Colclough			9										9
Tony Hartney			7	13		9							29
Ruth Wallace			6										6
Anthony Carolan			5										5
Renee Kennedy			5										5
Adrian Finely				11									11
Pat Walsh (Ennis)					13								13
Colm Murphy						7		9	13	11			40
Tony Hartnett						6							6
Jack Kearney									15				15
Tony Lally									7				7
Brenda Kelly										9			9

Woodturning Magazine.

From GMC Publications.

Just to let everyone know, the Magazine Subscriptions for the next 12 issues are all in, and the Magazine has been ordered.

For those who paid up a few months ago, sorry for the delay, but there were some late comers, and also a miscommunication in one of the Chapters who use this service.

For those who have ordered it, and by the time you read this, you should have started to receive your first issue or issues.

There is a fall off in the quantity we have ordered, and this has been due to a few reasons, the main one being a bad delivery service from GMC, and having to chase up replacement copies. Some people got replacements through me, but others contacted GMC direct, so I did not know the problem was as widespread as I thought.

I have been in contact with GMC (who use an external Mailing Company) about this problem, and they have come back to me, admitting that they have experienced problems with deliveries, and have dispatched another of their publications (Photography titles) through a different mailing company, on a test basis, which has resulted in a much better service.

From the end of September, they are handing over the shipping of "Woodturning" to this newer company, and hopefully the service will improve.

Should anyone not receive an issue as normal any month, can I ask that you contact me and let me know. Chasing GMC is not a huge problem to me, but you can chase them up yourself if you prefer. In all cases, can you inform me, and I can then compile the number of non-deliveries over the next 12 months.

If I don't know the extent of the problem, I cannot try to iron it out in the future.

Any questions, contact: Graham Brislane,
 1 The Drive,
 Boden Park,
 Rathfarnham,
 Dublin 16.

Phone: 01-4941 963

Mobile: 087-2914 770

Email: grahgill@eircom.net

The annual '**Sculpture in Context**' exhibition is on at the Botanic gardens, Glasnevin. It runs until 20th October.(SculptureInContext.com).

There are 145 sculptures displayed both in the indoor exhibition area and around the gardens. Some are in wood, see picture here, with others on the website. Thanks to Frank Maguire for the heads-up.



NATIONAL SEMINAR



Jim Kelly of the IWG, has sent on a form that can be used ahead of the National Seminar on October 14/15. It is for those who wish to enter the competition. See page 8.

Also there are some items below related to the seminar registration, the competition, the Chapter Challenge, and dinner on Friday 14th.

Some Points To Note To Speed Up The Seminar

Registration of Delegates

Tom Dunlop will open the registration desk on Friday 13th October from 5.30pm to 7.00 pm to facilitate delegates who are staying in the hotel.

Saturday & Sunday morning registration desk will be opened at 8.00 am.

Competition

Competition pieces will be taken in on Friday 13th October from 5.30pm to 7.00 pm to facilitate delegates.

Saturday morning competition room will be opened at 8.00am till 11.00am

Forms to enter the competition will be available on the website under seminar and will also be sent to the Chairman, Secretary and Treasurer of the Chapter. These forms can be filled out and handed in on the date to speed up the process.

Chapter Challenge

Please let Sean Hogan know if you are entering this competition with the size of the project so that he can plan where to display them. The concrete mixer can also be taken on Friday 13th October from 5.30pm to 7.00 pm.

Dinner On Friday Night To Meet The Demonstrators

If enough delegates that have taken the hotel B&B meal package it can be arranged that the dinner can be taken in the main function room at 7.30pm with the Executive committee and demonstrators.

Afterwards the demonstrators can give an overview of what they are doing

For this to happen contact Sean by Email: vicechair@iwg.ie Mobile 085 1741429 if you are interested.

**Who were the winners 10
years ago - Oct 2007**



Adv - Seamus O'Reilly



Exp - Michael McNamara



Beg - Tony Hartney



First Name												IWG Membership No								
Surname																				
Phone No.												Chapter								

Delegate Y/N

Entries are free to seminar delegates. IWG Members who are not attending the seminar may submit items at a cost of **€10 per item**. This fee does not apply to the Under 16 or Under 19 categories.

IMPORTANT NOTE: A total of 3 items per person is permitted with a **maximum of 2 in any one category.**, e.g. *two items in the open and one item in the segmented section, or one item each in spindle, open and artistic sections.*

This rule does not apply to the under 16s, under 19s or professionals :- 3 pieces will be accepted in these categories.

Item ID	Category	Item Description (i.e. No. of pieces, Size, Type, Wood, Colour)
Official Use Only Place Sticker Here	(See note above)	Example: 10" Bowl in Elm with ebonised and textured rim.
Official Use Only Place Sticker Here		
Official Use Only Place Sticker Here		
Notes:		

By entering the National Seminar competition, you agree to abide by the rules set out by the Executive Committee of the Irish Woodturners' Guild. **All items must be collected before 12:45 pm on Sunday 15th October 2017.**

Signed _____ *Print Name* _____ *Date* _____

THIS SECTION TO BE COMPLETED WHEN ITEMS ARE COLLECTED ONLY

I confirm that the items listed above have been collected/returned to me.

Signed _____ *Print Name* _____ *Date* _____