



Irish Woodturners' Guild Dublin Chapter Newsletter

Plant a tree in 2001

Volume 8 Issue 1
Dec 2000-Jan 2001

Editorial

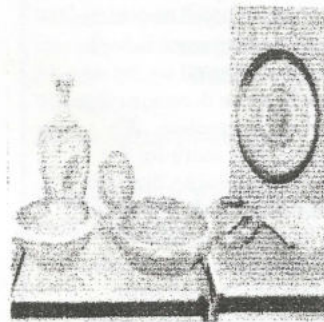
Another year gone and another to look forward to. It was an interesting one for woodturners, especially in the Dublin Chapter. We had a successful exhibition in Tal-laght and a well attended seminar in Larch Hill. Later in the year many of us attended the first national seminar held in the North which is still talked about. Meanwhile the Chapter continues to grow in strength, perhaps too strongly for some. Others feel that we will soon have to impose limits on our numbers. How to do that without endangering the very sociable atmosphere that we enjoy at our monthly meetings and and not discourage the very people who need help and encouragement is a knotty

problem. Anyway, there will be ample opportunity to voice your opinion at the AGM next month.

The February meeting is also the occasion for electing your committee. The chairman and the editor will be standing down from the present committee and hope that there will be hordes offering to take up the vacancies.

Having been involved with the newsletter for more than 3 years now I feel that a fresh approach to the editing could only benefit the Chapter. Its not a particularly onerous task requiring a few hours every 2 months. Access to a computer or word processor is necessary of course and I guess there are quite a few out there now with such modern marvels. I hope somebody will take over from me ASAP but in the meantime I'll continue to produce it to the best of my ability. A Happy New Year to all.

Chrishayes@eircom.net



Some competition entries at the National Seminar, Oct 2000

Photo—Frank Foley

Craft fairs

A couple in Cel-bridge are starting a newsletter to inform those interested of upcoming arts/craft shows, fairs and festivals etc. For more information call 01-6273972 or email <twilk@gofree.indigo.ie>

New chapter takes off— by Francis Morrin

North East Chapter

Many of you will have heard that a new chapter was formed in early 2000 to serve the counties of Meath, Louth, and the north-

eastern region of the country. There were many people in this area that, in the past, had expressed a wish to go to the monthly meetings but a 2-hour drive to Dublin, Ulster

or Galway was just too far. So in April 2000, we had our inaugural meeting in Kells and our first demonstration was held in my workshop in Co. Meath. Very soon after this

Inside this issue:

A chapter is born Craft fairs	1
Cork seminar 2000	2
November demo— Lidded box About b and b	3
Committee details December demo— tulip	4
The interview Poem	5
Poem/ Workshop Courses on Turning Previous demos	6
Competition results	7

" a two hour drive to Dublin , Ulster or Galway was just too far"

New chapter takes off-continued from page 1

workshop, we were offered the use of excellent premises near Newgrange, home to professional woodturner Seamus Cassidy. Seamus has a beautiful workshop and gallery in a restored stone barn and, as in all start up situations, his kind offer is the sort of one without which we would surely have foundered.

Since that first meeting in my workshop we have had demonstrations by Emmet Kane, Seamus Carter, Michael Magee, Jim Johnson, not to mention demonstrations by members of the chapter. We

and ask questions as the need arises.

We had our first AGM last December and laid out demonstrations for the first 6 months of 2001. As usual, the meetings will be held on the 3rd Saturday afternoon of each month and the demonstrators are:

1. January - Tom McCourt
2. February - Francis Morrin
3. March - Peter Donagh
4. April - Seamus Carter

received a major boost in October with the very generous loan by the Dublin Chapter of a set of books and videos from their library to help us start our own library. These books have been enjoyed ever since by our members and indeed have been boosted by the addition of some donations from members themselves. We charge a little more for the loan of these books than the Dublin chapter do but that's only insurance in case we have to replace any. We also use this fund to buy more books/videos. In time, when the library is on its feet we

5. May - Karl Foley
6. June - to be decided

So, on behalf of the Northeast chapter, I would like to say that any of you who would like to attend one of our workshops would be most welcome indeed. As I said above, we meet very near Newgrange and if you would like to pop along for a while, just give me a ring on (01) 8257654 for directions. Finally I would like to take this opportunity to say a big thank

hope to be able to reduce this charge.

When we initially set up the chapter, we decided to have our demonstrations on the third Saturday of each month, as this would avoid a clash between us and workshops in the Midlands, Ulster and Dublin chapters. So far this policy has worked very well for us and we often get very welcome visits from members of the other surrounding chapters. Our attendances so far have been in the 10 to 20 range, comfortable enough for all to see the demonstration



Seamus Cassidy

Our host at work in his shop.

you to all of you who helped and encouraged us during the past year and a very happy New Year to you all.

Francis Morrin, secretary
Northeast chapter.
Email< woodturner-fran@oceanfree>

"we received a major boost in October with the generous loan by the Dublin Chapter of a set of books and videos to help us start our own library"

Report on Cork seminar-by Cecil Barron

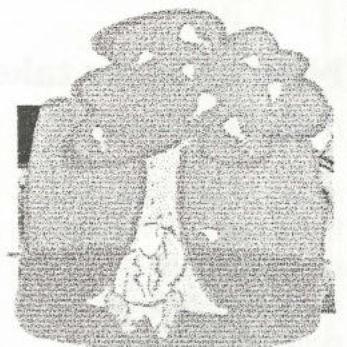
CORK SEMINAR SAT
21st OCTOBER 2000

This was the first time for me to attend a Seminar and after my

experience I will be on the road more often. The Cork Guild Secretary Tony Clifford went out of his way to arrange accommodation for me on Friday night and transport the next morning to the venue in Turners

Cross.

Over 100 turners attended the seminar and all the demonstrations were well supported. Personally I found Kieran Forbes and Bert Marsh to be the most informative and



Inspiring!

Turning at Turners Cross-the Cork seminar –continued

entertaining. Their level of skill had to be seen to be believed and I can only hope that someday I will turn just one item of a similar standard.

I entered in the Open Competition for turners with less than two years experience and was fortunate enough to win. My project was

a pair of candlesticks turned inside out in Cherry with Ebony inserts. The candlesticks were presented on a Wych Elm base and I also turned a candle snuffer to complete the set.

Winning was nice but the best part of the weekend was the friendly reception I received in Cork.

Cecil Barron

Bearings and Belts

A useful source for the above is a smallish supplier on the Dublin Industrial Estate in Glasnevin. Its called Rotate Ltd. 136 Slaney Close, Dublin 11, Tel. 8305455. Email <rotate@tinet.ie

Example: belt for DML24 costs about £6.



Belts for these too

The November Demo

Lidded Box.

By Geoff Cronin.

This was a bitterly cold morning with a forecast of approaching storms as Geoff got behind the lathe and told us of his approach to turning and to demonstrations, and at the same time entertaining all by a

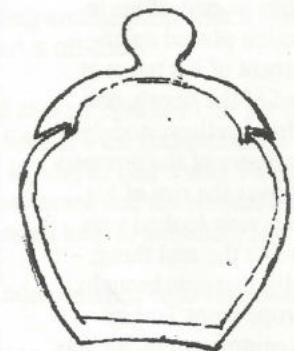
the rear end. Hollowing the interior was started by clearly defining the opening with a sharp parting tool, and continued, using scrapers and gouge while discussing the pros. and cons. of each method, finishing with the gouge which normally gives a better finish. A strong light shining on the bottom inside is essential to get the best finish. With inside ready for sanding, final shaping of the outside, in-

cluding clearly defining the bottom was completed. Sanding started using 120 grade and on through the grades finishing with 400 grade, then sealing and polishing before parting off. The outside of the bottom was hand held for sanding against a foam backed sanding pad held in a lathe-driven Jacobs chuck. The section for the lid was next mounted in the chuck and the outside shaping got under way. The lid over-

knob was sawn off, 40% approx.; the other piece, - the box body- was then mounted in the chuck by the spigot previously formed. Shaping of the outside was then commenced, using a gouge with a 45 degree grind, and final shaping at bottom done with a 30 degree grind which is more suitable for shaping the bottom curve at

hang was first carefully formed and the insert next, being carefully formed and checked until the desired fit was obtained. Inside of lid was hollowed by a gouge working from outside to centre. A hollowed lid gives a lighter lid which is desirable when the lid is being lifted by its knob. Inside of lid was finished at this stage, sanded as described for the box, sealed and polished. For sealing Geoff used liquid paraffin

Future demos at Terenure:
Jan 2001-Michael McGee, standard lamp
Feb 2001- no demo, AGM



Sketch of lidded box

Chairman-Jim Molloy, 39 Glenbrook Park, Rathfarnham, D14, 4934477.

Competitions and workshops- Frank Gallagher, 3 Rossmore Close, Templeogue D6W, 4902879

Hon. Sec-Pacelli O'Rourke, 161 Belgard Heights, Tallaght, 4515276

Treasurer- Harry O'Riordan, Acer Glade, Burnaby Park, Greystones, 2875345

Editor-Chris Hayes, 85 Willow Park Grove, Glasnevin, D11, 8422525

Librarian- Michael McGee, 35 Brompton Court, Castleknock, 8212795

Seamus Carter, 15 Woodlands Road, Johnstown Estate, Dun Laoire, 2850087

Irene Christie, 3 Willow Brook Lodge, Celbridge, 6276126.

Competitions for January 2001—Open February 2001—None

The December Demo

Tulips.

By Shay Nolan.

Tulips in December cannot be found in many gardens, but Shay as part of his introduction placed an arrangement of his tulips at the end of the bench, and the white, yellow, and dark blue colours of the drooped heads over the rim of his wooden vase looked very much like the real thing; - the tulip that was brought to Europe from Turkey many centuries ago, and is the national flower of Holland. Shay started by telling us the background to his getting interested in tulip making; he first saw them being turned out by a

local turner when on a trip to Holland; he later saw them for sale in the U.K. he then took up the challenge of turning them himself. He told us that to streamline and simplify tulip making and to have equal sized tulips in an arrangement or bouquet; measurements and initial preparation of the wood must be accurately carried out. Shay uses a low density wood, pine, whitedeal or poplar (also known as tulip wood), and prepares each piece accurately squared, 95mm. long and 45mm. square. The centre of each end is accurately located, and a pencil line drawn



Lidded box (Continued from page 3)

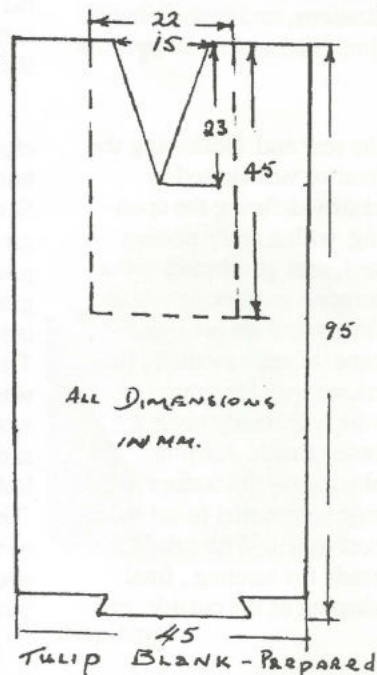
rubbed in and rubbed off again and then polished with Speedanese friction polish. Outside of lid including the knob, was shaped, working back towards the chuck and finally parted off. Lid was then reversed and held by its insert in the chuck while the knob and outside of lid were refined and shaped for best outline and proportion. Sanding and finishing as before finally carried out.

So ended a demonstration from a very knowledgeable and skilful boxmaker and a most accomplished funny story teller as well who not alone used his stories to entertain, but the best PUNCH LINE method was used to better illustrate some particular point he was trying to get across. Well done Geoff, and many thanks.

Michael Forde

centrally down each of the four sides. Then mounted between centres and a short spigot or dovetail formed at one end for chuck mounting, then when mounted in chuck a 20mm. or 22mm. hole is drilled in other end with a Forstner or sawtooth bit to a depth of 45mm. Then a Vee (for petal separation) is sawn centrally in the same end, 15mm. wide at the top and 23mm. deep. Then mounted in chuck turning down to a cylinder (45mm.) is done with the roughing gouge, - at this point Shay checked the accuracy of mounting by

Continued on page 5



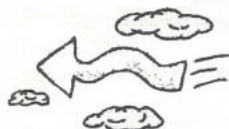
DECEMBER DEMO. (Continued from page 4)

Tulips.

By Shay Nolan.

by observing that the four lines drawn centrally on the sides were all but gone equally. Shay then marked a point back 65mm. from the nose, as the max. dia. and a point 20mm further back as the end at the stem. Shaping of the curves from the max. dia. point to nose and end was started with the spindle gouge and finished with the skew, to define the desired shape. (End shape is almost half a circle.) When shaping is completed tulip is left attached to its mount by a narrow spigot. Sanding was next done down to 180 grade only. As regards colouring, the advice was an application of sanding sealer on first will assist in getting a more even colour. Some discussion took place at this time on the type of colouring to use; water base, spirit base or food colouring, which some in the audience suggested was ideal. Tulip then removed from chuck and twisted from its base at the slender spigot. A bradawl was used to indent for a 4mm. hole which, when drilled, was used to mount the tulip on its stem and a garden plant stick, 35cm. approx. long was used for this. Final sanding is done by hand, around the edges of the Vees, and if necessary, the tips of the petals so that they appear even around the tip of the bulb. This is done prior to any staining. Leaves for an arrangement are produced by shaping (cutting by knife and sanding) and staining, strips of balsa wood, usually available in model shops. Since balsa absorbs the stain greedily care is required. Shay keeps his tulip arrangements mounted in oasis pads so as to maintain their relative positions in their vases. This ended an excellent demonstration where attention to detail and check - list preparation, combined with well practised skills, produced eye catching flowers.. Many thanks Shay for showing us how.

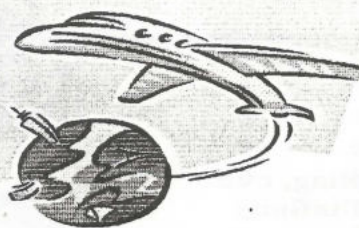
P.S. At the Dec.20. Northside Woodtalk Meeting at Grange Comm. College, Mick Healy arrived with one of his classic vases displaying an arrangement of drooping head tulips, which he made after seeing Shay's demonstration. Mick did not have the garden plant sticks for use as stems so instead used fairly stiff green plastic covered garden wire; I thought the slightly drooping tulip head result was an added bonus. This goes to show Shay's Demo. was well taught and Mick Healy is a great mature student!! M.F.



Winds of change

Only yesterday it stood proudly there
Bedecked with multicoloured Autumn wear.
Sunlight filtered through its leaves
As the branches swayed in a gentle breeze.
Last night the breeze went wild with rage.
Dawnlight revealed another stage
Humbled- the tree still stood there
Now dressed in flimsy underwear
A few straggling leaves to its branches cling
Cinderella- like, it awaits the Prince of Spring.

—Pat Lambert



THE INTERVIEW

For a change I thought you would like to hear about someone not on the

committee but who contributes a great deal to the Chapter in various ways. For one he helps me get this newsletter out every issue by faithfully recording every demo and writing it up leaving me very little to do in that regard. In case you are new to the Chapter he is **Michael Forde** and I went to see him at his home in Raheny

Editor—I always ask people about their background first; it helps to set the exchange in the right direction; about yourself?

Michael— Having started my working life as an Air Corp apprentice at age 17, and progressed through Aer Lingus to Bolton Street college as a lecturer in Aeronautics for 26 years until retirement, I probably spent nearly half a century involved with the aircraft industry in some way or another.

Ed— Sounds like you know your piston from your jetpipe, but how did you get involved with woodturning since aircraft engineering seems a far cry from messing with bits of wood?

Michael— I'm not alone by any means in enjoying the pleasures of working with wood as I could mention just two other members of our Chapter, Louis Tracey and Bill Kilpatrick who worked all their lives with aircraft but always had a fondness for things wooden too.

Ed— So you only really took up turning after retirement?

Michael— When I retired 10 years ago I did a number of courses on turning including one with Craft Supplies in England and another with Paul Laycock at North Strand. I invested in a Coronet No.1 lathe which has served me very well in that time and I have no wish to change it. I use the Multistar chuck which despite the fiddly jaws possesses great holding power and I would recommend it anytime.

Ed— Looking around your workshop I noticed that you set great store by dust extraction.

Michael— As well as a conventional drum extractor coupled to a tube behind the lathe I installed a Microcleane dust collector overhead. It all helps.

Ed— Apart from your Kity bandsaw and ordinary grinder what other equipment do you find useful?

Michael— I have an elderly combination sawbench and planer powered by one motor on a sliding arrangement which works well provided I remember to start it off-load!

Ed— Ever sell your work?

Michael— Well, I've never sold at craft fairs but I do get the occasional sale which suits me fine. It's the pleasure from making and giving that keeps me at it. Maybe that's why I enjoy the Terenure meetings so much. The demos and the standard and variety of the competition entries all help to stimulate and maintain my interest.

Ed— Lastly, tell me about your other interest, also far removed from woodwork.

Michael— I had to learn something about electronics to keep up with the changes in aviation and then I began to enjoy fixing radios and other gadgets. That's why I have a collection of spares going back many years, much of it to do with valve technology. Need an obsolete triode or pentode?

Ed— Fascinating! Thanks for talking to me and thanks also for writing up the demos so faithfully.

Tree by Ita Kenny



Woodturning Courses

For anyone you know who's looking to learn the basics or perhaps a little more, the following may be of interest:

Seed, sapling, tree
A life of infinity
A growing asset
An enhancement to landscape.

A foothold in the earth
A scaffold to the sky
Branches that encompass
The universe.

Leaf lovely in summer
Bejeweled in autumn
With topaz, garnet and amber leaves
A wood sculpture in winter.

In afterlife beautiful still
Due to the creative skill
And unique artistry
Of dedicated craftsmen.

The emergence of shapes
Shades and textures of wood
Is evidence of its versatility
And intrinsic value.

1.
Venue—St. Tiernan's Community School, Balally, Dundrum,
Enrolment—8th,9th and 10th January 2001, 7.30 on.
Tutor —Gay McGrane
Classes—Monday and Wednesday, 7.30 to 9.30, both for mixed ability.
Phone —01-2953224

2.
Venue — Ballymun Comprehensive School, D9
Enrolment —8th to the 10th January 2001, 7.30 to 9. Or after these dates while places are available.
Tutor—Chris Hayes
Classes- Monday 7.00 to 9.30 for those with some experience.
Tuesday 7.00 to 9.30 for beginners.
Phone—8420654/8421015(day) 8428644 (night)

Private Tuition from

Joe O'Neill, 27 Ballinteer Drive, Dublin 16, tel 087- 6230162

Jim Coyle
13 Carrick Hill Close

Demonstrations at the Dublin Chapter meetings.

2000

December Tulip	Shay Nolan
November Lidded box	Geoff Cronin
October Fruit	Tom McDonagh
September Bud Vase	Eddie O' Reilly
August Lamp	Irene Christie
July Chucking methods	Herve de Wergefosse
June Chain saw operation	Adrian Finlay
May Goblet	Gay McGrane
April Candlestick	Des McMahon
March Off-centre box	Chris Hayes
February AGM	-----
January Routing	Peter Mulvaney
1999	
December Clocks	Joe O'Neill
November Christmas items	Mick Healy
October Nest of bowls	Francis Morrin
September Finial	Des O'Halloran
August Dust protection	Owen Furniss
July Barley twist (part 2)	Seamus Carter
June Question and answer	Seamus Carter
May Barley twist (part 1)	Tony Rea
April Natural edge bowl	Tom Hayes
March 3 legged stool	William Edwards
February Bandsaw	-----
January AGM	
January Napkin rings	Tom McDonagh

1998

December Candlestick	Peter Mulvaney
November Bottle coaster	Des McMahon
October Secret drawer	Owen Furniss
September Ebonising/texturing	Emmet Kane
August Lattice work	Ned O'Donnell
July Built-up work	Phillip Kerr
June Bottle stopper	Peadar McArdle
Barly twist	Paddy O'Connor
May Ship's wheel clock	Peter Mulvaney

Note :my records are missing previous to above, sorry

Workshop on Friday January 12 2001 at
Joe O'Neill's studio
27 Ballinteer Drive, D16
call 087- 6230162 to book your place

JWW

Score March April May June July August September October November December

Advanced

Des McMahon	107	6	15	13	15	15	11	6	6	9	11
Tim McGill	82	5	9	0	5	0	15	7	13	15	13
Phil Kerr	65	5	13	6	6	0	6	11	5	13	0
Albert Sloane	62	9	0	0	9	11	0	9	9	0	15
Eddie O'Reilly	56	5	11	11	7	7	0	5	5	5	0
Seamus Carter	54	5	0	5	0	9	7	5	5	11	7
Henry East	49	13	0	15	0	0	0	15	6	0	0
Peadar McArdle	42	5	7	9	5	0	0	5	5	6	0
Hugh Flynn	39	5	6	0	0	0	0	13	15	0	0
Michael McGee	35	0	0	0	13	13	9	0	0	0	0
Paddy Doyle	33	5	0	7	0	0	0	0	5	7	9
Michael Ford	15	15	0	0	0	0	0	0	0	0	0
Peter Mulvaney	13	0	0	0	0	0	13	0	0	0	0
Adrain Finlay	11	0	0	0	11	0	0	0	0	0	0
Owen Furness	11								11	0	0
Christy Byrne	10							5	5	0	0
Mick Deegan	7	7	0	0	0	0	0	0	0	0	0

Experienced

Cecil Barron	126	13	15	15	9	13	9	9	13	15	15
James Gallagher	111	0	0	24	15	15	13	15	5	11	13
Frank Foley	89	15	0	0	13	11	11	6	11	13	9
Fran Lavelle	70								57	6	7
Albert Dooley	55					33	15	7	0	0	0
Donal Brown	54						37	11	6	0	0
Martin Fitzpatrick	52									46	6
Pacelli O'Rourke	48	6	0	9	5	9	0	5	7	7	0
James Nolan	47	5	13	11	5	0	0	13	0	0	0
Richard Sheridan	31	5	0	13	6	7	0	0	0	0	0
Chris Hayes	31	0	0	0	7	0	0	0	15	9	0
Barry Dunne	20								9	0	11
Jim Molloy	12	5	0	7	0	0	0	0	0	0	0
Carl Foley	12	0	0	0	12	0	0	0	0	0	0
Geoff Cronin	11	11	0	0	0	0	0	0	0	0	0
John Wigham	11	0	0	0	11	0	0	0	0	0	0
Tom McCourt	9	9	0	0	0	0	0	0	0	0	0
Gay McGrane	7	7	0	0	0	0	0	0	0	0	0
Frank Gallagher	5	5	0	0	0	0	0	0	0	0	0
Sean Dunne	5	0	0	0	5	0	0	0	0	0	0
Michael Kenny	5								5	0	0

Beginners

Tom Gibson	69	9	6	6	5	9	6	11	5	7	5
Billy Kelleghan	61	0	0	13	9	0	11	0	6	11	11
Tom Mc Keon	48	0	0	0	0	11	0	6	5	13	13
John Holmes	46	13	0	0	5	6	15	0	0	0	7
Stephen Kestell	32	0	9	0	5	0	0	9	9	0	0
Niall Cahill	30	0	11	5	0	0	0	0	5	9	0
Seamus O'Reilly	25	0	0	0	5	0	0	0	5	0	15
Irene Christy	23	0	0	5	6	0	0	7	5	0	0
David Byrne	17	0	0	0	0	7	0	0	5	0	5
Pat Lambert	14	0	0	0	5	0	0	0	0	0	9
Brian Wall	11	11	0	0	0	0	0	0	0	0	0
Seamus Dunne	11	0	0	11	0	0	0	0	0	0	0
Dave Naessens	11								11	0	0
Robert Tate	10	0	0	0	5	0	0	0	5	0	0
Paddy McLoughlin	7	0	0	0	0	0	7	0	0	0	0
Norman Bannister	7								7	0	0
Pat Walsh	6										6

4+1
4x2
3x4

13
15

WOOD

*Brian Walsh
Ashford
Co. Wicklow*

0404-40504

Mon to Fri 9-6
Saturday 10-1

Usually available:
Yew, walnut, spalted and regular beech.
Blanks for bowls, clocks, platters.
Square stock and branchwood.
Best to ring beforehand.

FOR SALE

Lathe

Newtool 37inch lathe, single bar,
extendable, 4 speed.
With many extras including
faceplates, outboard toolrest and screw
chuck.
Cost £169, sell for £100

Call Frank Trappe on 01- 8427437 or
087-2209033
Between 7and 9pm

Need some wood ?

Tom Gibson of the Dublin Chapter may
be able to help.

He can supply seasoned timber, native
and imported.

Also lamp kits and cellulose sealer in one
litre cans, ready mixed with thinners.

For a quote call 01- 8420634 or
086-8241470

Collect orders preferably Tuesday to
Thursday up to 7pm.

Note: Tom supplied the timber for the
January demo, check it out.

**Clock movements
and watch inserts**

**Philip J.Dix and Co.
6 Aston Quay
Dublin 2**

01-6717144/6710579

Call and see the full range
at very reasonable prices.

FOR SALE

Record Power Turbo Visor—£100
Sheppach Dust Extractor HA2600-£150
Also some handtools

Call Mary Williams on 01-2810834

For Sale

Coronet Major combination lathe and
sawbench, with various attachments.
Set of HSS turning tools included.

All for £600

**Gabriel Cunnane at
01-4904049 or 087-6377133**

Note!!!!!!!!!!!!!!

Members of the Chapter may
advertise anywhere in this news-
letter free of charge.

18

**NEXT WOOD-
TURNING SEMINAR**

**Limerick Chapter on
April 7th 2001**

See Guild Journal for details

The Ulster Chapter seminar
takes place on May 26th 2001

Again check the Journal for
venues etc.

18



190
80
270

150
300

15

375
190
100
85

325

190
100
290

10 € 15

300