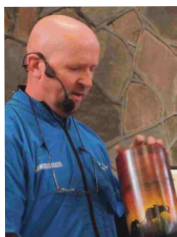


June 2019



Inside This Issue:

- ▶ Seminar with Pat Carroll -P1.
- ▶ May Competition Result -P5.
- ▶ Editors Appeal -P8.
- ▶ Seminar Competition Results -P9.
- ▶ Lost And Found -P10.
- ▶ Competitions, Trade Stands and Dmemonstrators -P11.
- ▶ Current Leader Board - P12.



Seminar with Pat Carroll Saturday 4th May

John Doran welcomed the large attendance and introduced our demonstrator for the day Pat Carroll. Pat was test driving our new Stratos lathe.

Today Pat was demonstrating how to turn a hollow form vase and the spraying and stencilling of a design on the vase. He suggested that the way turning is going now it is 20% cutting and 80% decoration of one sort or another.

Pat used a piece of sycamore. He examined the wood for splits and cracks and then used a bowl gouge (as he had forgotten his roughing gouge) to shape the outside. Pat put a foot on the vase using a parting tool with a gentle first cut as cutting straight across the grain will tear it. The foot was 110 mm across, with 12mm deep to get a good grip in the chuck.

Upcoming Events:

- Saturday Demo: **Kieran Reynolds**
- Wednesday Demo: **Colum Murphy**

Pat now had a rough cylinder. He avoids sanding at demonstrations because of the dust. He cut straight across the base with the parting tool and had quite a lot of tear out noting that with spalted wood it will be worse. He now used a skew chisel to clean it up. He refined the shape of the vase, again using a 1' bowl gouge. He then used a planning cut with the skew chisel at 45 degrees. A bevel cut to start, to avoid digging, with the lower 3rd of the edge. He looked for a nice fine cut, not ribbons of shavings, he then took away the tail stock to make sure everything was ok.

Now Pat worked with the spindle gouge, sharpened very well, for nice gentle cuts. Too much pressure would cause vibration. He used an angle of 45 degrees, cutting towards the centre. With the tail stock back on, he drilled a hole using a drill bit with a Morse taper, stepped so that it widens as it goes. He suggested to drill as close to the bottom of the vase as possible and to check often to ensure correct depth. Pat used a Hamlet Big Brother hollowing tool. He said that there were three sizes of this tool, the Big Brother, the Little Sister and the Goliath, named for the size of the cutter. Pat also uses a small magnetic light to show him what's going on while he's cutting. When the cutter is too aggressive he needs to adapt by rotating the tool to minimize the cut. Rotate to 45 degrees for sheer cuts. He runs the tool up and down the wall. Pat recommends



Who were the winners in June 2009? Recognise any of them?

Answers on page 6.



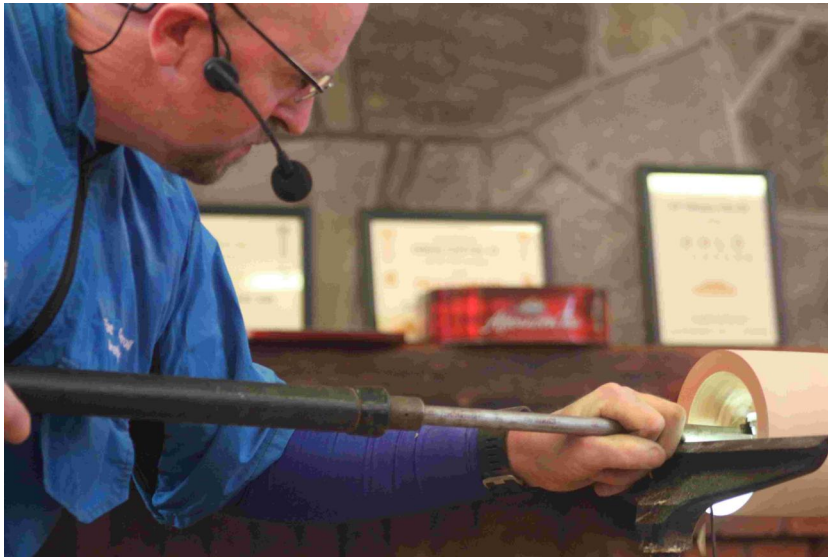
Advanced



Experienced



Beginners



Chairman: John Doran
087 6393081
DWT.Chair@gmail.com

Secretary: Tommy Hartnett
086-8284178
DWT.Secretary@gmail.com

Treasurer: Vincent Whelan
087 760 4918
DWT.Treasurer@gmail.com

Vice-Chairman: J. McCloughlin
087 2610803

Membership: Mark Daly
087 9484051
DWT.Membership@gmail.com

Competitions: Cecil Barron
353 1 846 1666
DWT.Competitions@gmail.com

Books & Video: Paddy Finn
087 9801142
DWT.Library@gmail.com

Exhibitions: Paul Murtagh
(087) 133 1292

Audio/Visual: Open

Wednesday Demos: Colum Murphy
087 255 7665

Newsletter / Web Master:

Brendan Kelly
086 3748183
DWT.Newsletter@gmail.com

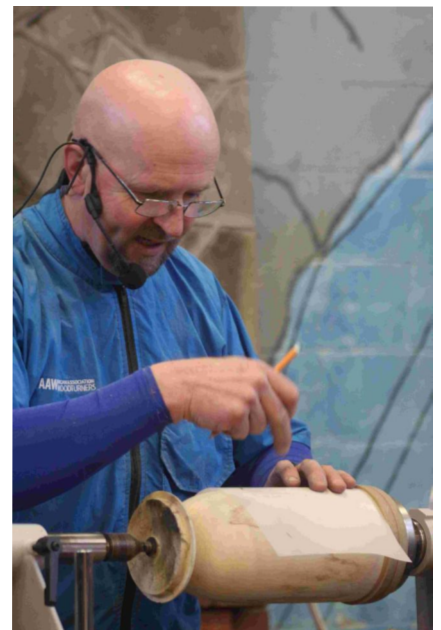
Chapter Contacts

that if you are interested in doing hollowing, do open forms, and let your ears tell you how the tool and the wood is responding, because you can't see in. As you go deeper the overhang is greater so take smaller cuts, also bending down more to pick up the centre point. Now Pat was nearly down to where he had drilled. He put the tail stock back on, re-drilled, measuring the depth. Taking the tail stock off and the tool rest raised to avoid catching, he then turned down the walls looking for 5mm thickness. He went on to refine the walls with a scraper. He then reduced the bottom but again advised to be conscious of shrinkage. When roughed out leave them to dry and then finish off.

After the tea break Pat demonstrated decorating skills. He recommended blowing up a balloon to place inside the piece to avoid stray paint getting in. Also to protect the lathe he suggests using a piece of plywood or wrapping it in cling film. He then placed a piece of MDF on the lathe and turned it to a taper as a Jam Chuck (He mentioned here again about safety equipment especially when using MDF). He then rounded off the shoulders.

Not finding stencils of the right size, Pat found suitable pictures on YouTube which he could resize on screen as needed but make sure to get the proportions right for the size of vase. He used a soft pencil to trace images onto paper and then transferring the image to the vase, by placing the pencil side down and scribbling over the image on the reverse of the paper. Pat used frisket – a low tack paper to wrap around the vase to protect it. He then cut out the frisket over the images for the elephants and the tree to produce a stencil and pointed out that the softer the pencil the better.

Pat used an airbrush with a compressor to build up the black layers gradually. He got his on Amazon for around €60. He used spirit dye for black and kept





the airbrush clean with thinners. He then sprayed gloss over the black, gave it a blast of a blowtorch to dry it and then removed the rest of the paper. From here on it is the slow build-up of colours that creates a good image.

Pat used Golden Fluid Acrylics for spraying. For grass: he cut ribs cut out of cellulose card for the stencil and used red paint with a dab of blue for the flowers. He used the ragged edge of a cardboard sheet to create a stencil for the edges of the clouds. Translucent white was then used





to get a pearlescent effect of mist across the African plain, (His new name is Pat 'Picasso' Carroll). He finished with a gloss lacquer, building up the layers, and then blow torched it gently to dry.

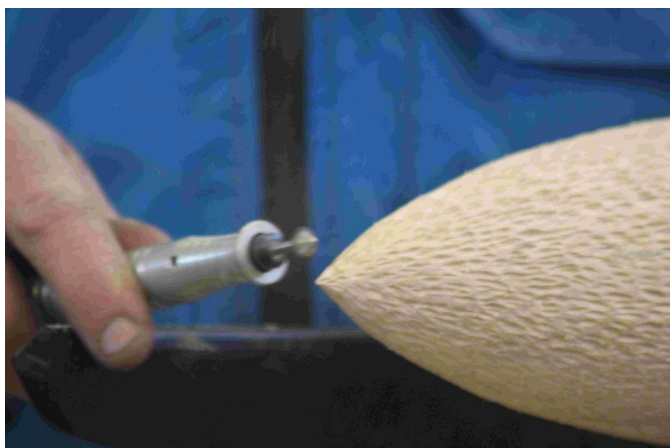
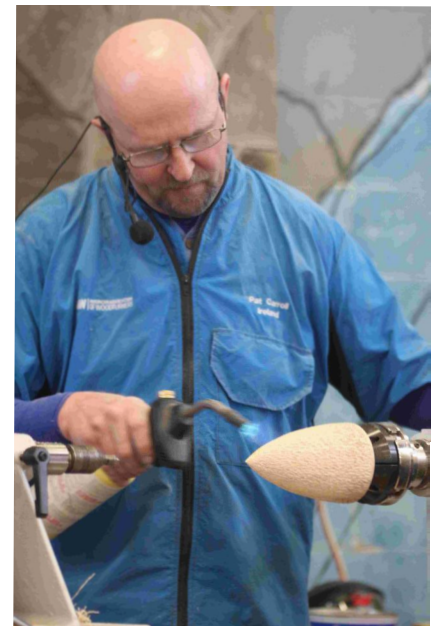
After lunch Pat made a display item to demonstrate texture and finish. Using a piece of sycamore between centres and a 3/8 bowl gouge, Pat turned it to a cylinder and then turned a tenon on one end. He turned it around and turned it to near the shape he wanted. He then drilled a hole to facilitate hollowing.

He went on to hollow out to the depth he wanted. While establishing the shape he was not worried about torn grain. He textured the outside and then sprayed the inside with black and blow torched it dry. Turning it around he used the drive centre to line it up. Using a small bowl gouge he cut down the grain to minimise tear out. Then a final run down with the skew to finish it up. Pat suggested random uniform lines for the texture. Using a Foredom SR, a flexible shaped sander, he touched the lines all over the piece. Using a small sharp spindle he finished off the pointed end of the piece and cut it free from the tailstock. Then he finished the end of the piece with the

diamond cutters. To fix raised fibres, Pat burned them off with the blow torch. A little bit of sanding with 150, he then brushed with the grain with a copper brush.

Pat then sprayed alternately with Interference blue and green iridescent paint which should be thinned out. He recommends a very fine mist sprayed across the top of the piece not into the surface, rotating the piece as you spray to colour one side of the cuts. Then go down the hill in the next colour, building gradually. The colours will reveal themselves alternately when the piece is viewed at different angles. Then spray with some pearlescent white and lacquer. you now have a very nice coloured hollow form for display.

We had two great demonstrations from a true artist which everyone enjoyed as was evident from the applause at the end. Everyone there left with a lot of great ideas in their heads which we are sure will start to show up in our monthly competitions. We wish to thank Pat for a very entertaining day and new ideas to try.



May Competition Winners.



A bumper entry this month.



Advanced - Pat Walsh



Experienced - Tommy Hartnett



Beginners - Brendan Kelly



Artistic - Colum Murphy

Other Competition Entries



Other Advanced entries.



2nd Colum Murphy



3rd James Gallagher

More Advanced Entries.



4th Tony Hartney



5th Joe O Neill



6th Paul Murtagh

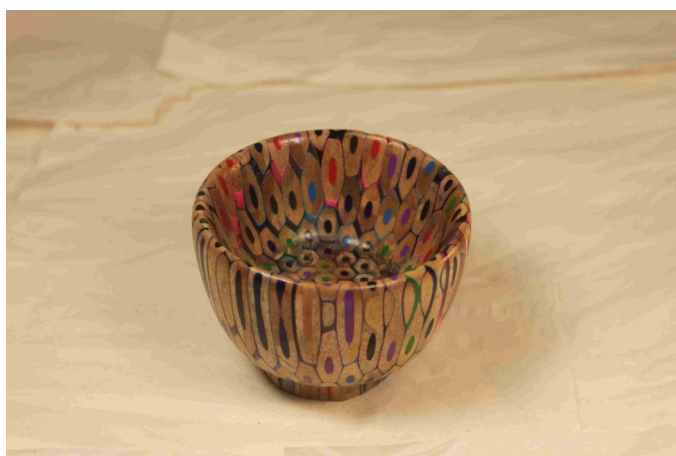


7th Paddy Flynn

Other Experienced Entries.



2nd Brendan Phelan



2nd Brigie DeCourcy

Other Artistic Entries.



2nd Seamus O Reilly



4th Joe O Neill



5th Pat Walsh



3rd Brendan Phelan



6th Frank Maguire

More Artistic Entries.



Joint 7th Kevin Milton



Joint 7th Tony Hartney



Joint 7th Tommy Hartnett



Joint 7th Paul Murtagh

Editor's Appeal



If you come across any articles of interest on the net please forward them to me for inclusion.

I would like to expand the Links page of the website to include links to interesting Youtube videos. If you come across an interesting video email me the link and I'll include it.

You can contact the editor (Brendan Kelly) on 086 3748183 or by email at dublinwt.newsletter@gmail.com

Overall Seminar Winner.

Pat Walsh



2nd Tony Coady



3rd Colum Murphy

Seminar Runners up.



Imelda Conolly



Cecil Barron



Cecil Barron



Cecil Barron



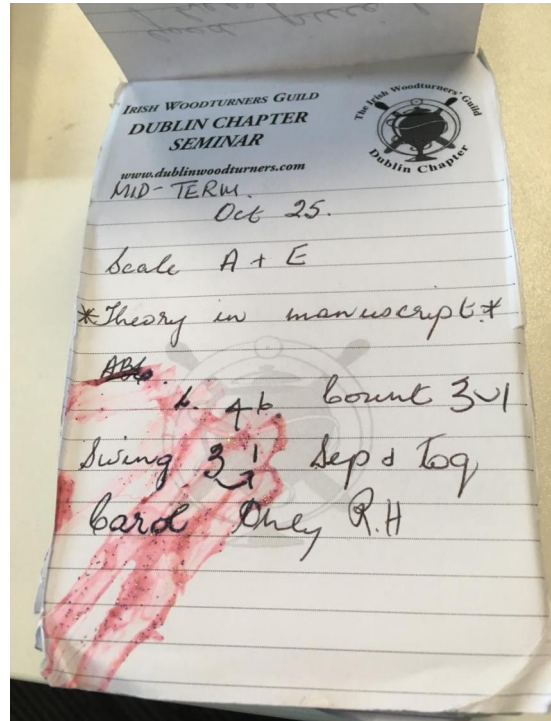
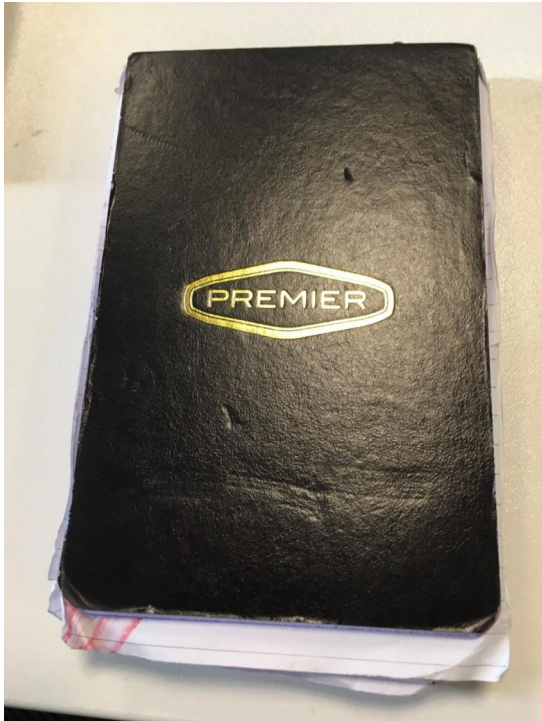
Pat Walsh



Tony Coady

Lost And Found

A kind member of the public came across this notebook. If you recognise it please contact the editor (Brendan Kelly) on 086 3748183 or by email at dublinwt.newsletter@gmail.com and I will put you in touch with the finder.



A member on the public contact me to say they have cut down a 40 year old Sycamore tree in their garden and wonder if some of our member would be interested.

If you are interested please contact the editor (Brendan Kelly) on 086 3748183 or by email at dublinwt.newsletter@gmail.com and I will put you in touch with them.



Competitions Pieces 2019

Jan	Wizards magic wand
Feb	Box with lid
Mar	Salad bowl (with servers advanced & experienced)
Apr	Jewellery Item
May	Open
Jun	Goblet with captive rings
Jul	Natural edge bowl
Aug	Chalice
Sep	Platter
Oct	Three legged stool
Nov	AGM
Dec	Christmas Item

Trade Stands - Saturday 2019.

Jan	The Carpentry Store
Feb	The Shed
Mar	The Hut
Apr	Bring & Buy
May	The Carpentry Store
Jun	The Shed
Jul	The Hut
Aug	Carpentry Store
Sep	The Shed
Oct	The Hut
Nov	Bring & Buy
Dec	Carpentry Store

Demonstrators 2019

	Saturday	Wednesday
Jan	Irene Christie	Tony Hartney
Feb	Michael Fay	Colum Murphy
Mar	Rich Varney	Sean Earls
Apr	Willie Edwards	Colum Murphy
May	Pat Carroll	
Jun	Kieran Reynolds	Colum Murphy
Jul	Pat Walsh	
Aug	Jack Kearney	
Sep	Charlie Ryan	
Oct	Roger Bennett	
Nov		
Dec	Danny McGeever	

Competition winners in June 2009.



*Advanced:
Tony Lally*



*Experienced:
Frank Gallagher*



*Beginners:
Rich Varney*

Current Competition Positions

Beginners	Dec	Jan	Feb	Mar	Apr	May	June	July	Aug	Sept	Oct	Nov	Total
Brendan Kelly	15	15	15	13	15	15							88
Brigie DeCourcy				15	13	13							41
Vincent Whelan		13	13										26
John O'Neil					11								11
Experienced													
Brendan Phelan	13	15	15	15	13	13							84
Tommy Hartnett	15	11	11	13	15	15							80
Pat Costigan		13											13
Kevin Milton			13										13
Advanced													
Colum Murphy	13	15	13	15	9	13							78
Tony Hartney	15	5	15	13	11	9							68
Frank Maguire	7	13	6	9	6								41
Paddy Finn	9	7	7	7		5							35
Paul Murtagh				11	7	6							24
James Gallagher					13	11							24
Cecil Barron		11	11										22
Johnathon Wighan				6	15								21
John Duff		9	9										18
Sean Ryan	11				5								16
Pat Walsh						15							15
Joe O'Neill						7							7
Rich Varney		6											6
Artistic													
Brendan Phelan	13	15	15	13	15	11							82
Colum Murphy	15	13	13	15	11	15							82
Cecil Barron		11	9	11	9								40
Paul Murtagh	11		11		13	5							40
Seamus O'Reilly						13							13
Vincent Whelan				9									9
Joe O'Neill						9							9
Pat Walsh						7							7
Frank Maguire						6							6
Tommy Hartnett						5							5
Kevin Milton						5							5
Tony Hartney						5							5

Wednesday Demo.

This demonstration was presented by Colum Murphy. Colum talked firstly about sharpening and showed how he sharpens his own tools. He then turned some Ash into a bowl demonstrating different cuts. He showed us how he turn bowls and by coring them beforehand you can use the core to put a foot on the bowl or alternately use a different wood for the foot. When he had the bowl turned he then demonstrated how to cut designs into it using a new tool he had just bought in ALDI. This is a new line of battery powered tools which ALDI have brought out called Ferrex tools and the one battery fits all the tools from Drills to Lawnmowers. The only warning Colum gave was to advise that there are two types of batteries a 20v and a 40 v. the 20v only works on the smaller or less powerful tools where the 40v works on all the tools so only buy the 40v. Using the cordless small angle-grinder with sanding wheels. he showed how to cut curved lines all around the bowl. You can then burn or ebonise the bowl and highlight the grain. When lacquered with either matt or gloss it really comes to life. Colum showed us several samples of different designs he did on bowls, each one giving more ideas to those present.

After lots of questions which Colum fielded without any problem, he demonstrated how he turned simple tea lights out of ash for Christmas. Colum stuck to the one design and sprayed them red with spray glitter lacquer sprayed over to make lovely Christmas tea lights. Thanks to Colum for a great afternoon with a lot of questions answered and a lot of knowledge imparted. By the way Colum IS LOOKING FOR VOLUNTEERS FOR THE WEDNESDAY DEMONSTRATIONS. There are no pictures on the Wednesday demo although I'm sure someone took some. If you do take photos of any demo please email them to the editor at dublinwt.newsletter@gmail.com